

FLAXTON VILLAGE PLAN - 2023





Flaxton Railway Station



Looking north with the pub and Elm Tree Farm



Interior of St Lawrence's Church



Looking north to Fairview and Flaxton House



Looking south to The Blacksmiths and beyond

Flaxton Village.



The Village School



Cows on The Green



Looking south across The Green

Flaxton Village.

FOREWORD

We are delighted to have produced this Flaxton Village Plan which outlines a vision for the development of the village over the next five to ten years. The plan provides information about Flaxton followed by a description of the process which has led to the publication of this plan. The main body of the plan is an analysis of the responses to a questionnaire completed by villagers. Recommended actions are suggested in each section which are then drawn together in an action plan. It is intended that the action plan will be a 'live' document held on the Parish Council website www.flaxtonpc.org.uk as a means of recording and demonstrating progress towards the various goals.

We would like to thank Community First for their support and guidance in the early stages of developing this plan. Thanks also go to Ryedale District Council, North Yorkshire County Council (NYCC) and the emergency services for their attendance at the initial village plan meeting. We are grateful to NYCC Stronger Communities for the grant funding which has enabled us to print both the questionnaires and this final plan.

This plan would not have been possible without the engagement of the villagers who have attended meetings, filled in questionnaires, and shared their opinions with us – thank you. A final thankyou to Flaxton Parish Council for initiating this project and the Village Plan Steering Group for driving it forward.

Flaxton is a beautiful village in an idyllic location which we believe will be further enhanced and protected by the actions identified in this plan. In the post-pandemic era, it will also help to foster and strengthen the sense of community which is integral to village life. We hope this plan inspires you to get involved in some of the actions that are of interest to you.

Regards,

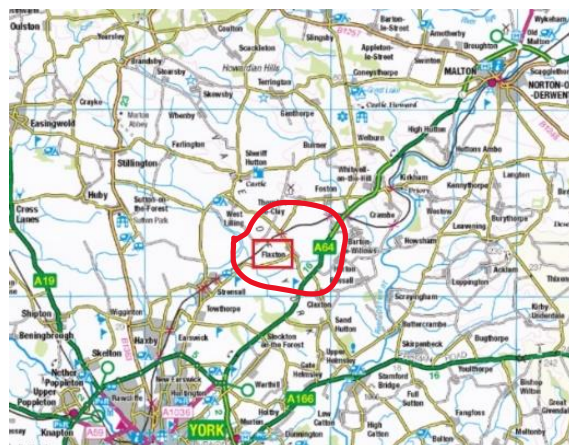
The Village Plan Steering Group

Chris Irish (Chair)
Steve Axford
Ian Craven
Simon Hudson
Liz Martindale
Christina Steveni

FLAXTON VILLAGE

Flaxton is a village in Ryedale, North Yorkshire, situated one mile north of the A64 trunk road between York and Malton. The village is nine miles from the centre of York and eleven miles from Malton.

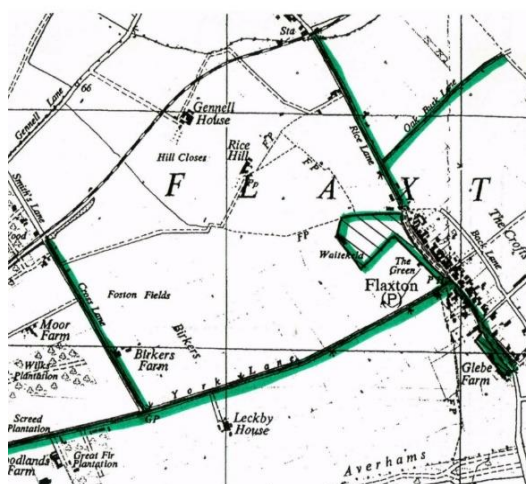
Flaxton Parish lies in the Thirsk and Malton parliamentary constituency and in April 2023 will become a part of the North Yorkshire Unitary Authority within the Sheriff Hutton and Derwent electoral division.



Flaxton location – Reproduced from Ordnance Survey



Flaxton is mainly a linear village built over a two-kilometre stretch of road with former farms and residential houses on its east side with crofts behind and open greens to the west side.



Extent of The Commons

Common land is a major feature of the landscape in Flaxton. The map alongside shows the extent of the commons which are managed by the Flaxton Green Gait Owners (FGGO). Where roads are marked in green the Commons extend from hedgerow to hedgerow. The shaded areas are bounded by fences or hedgerows.



The term ‘common land’ is often misunderstood to be public land, but in fact it is all privately owned and refers to the ‘rights of common’ held by FGGO by virtue of their private ownership of land elsewhere in the village. This gives owners the right to graze a specified number of cattle on the common land.

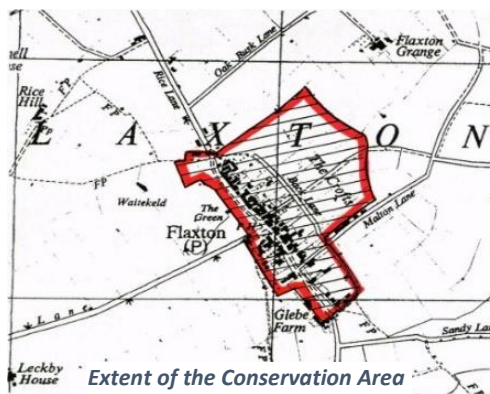
FGGO are also the beneficial owners of the common land, but because they own it in undivided shares, the legal ownership is vested in the Public Trustee.

FGGO are a voluntary association without any powers devolved to them, although as beneficial owners, they are expected to manage the common land. Legal consent is required from the Planning Inspectorate for many actions and developments on the common land, such as making roads, paths, and parking areas.

This land is highly valued for its contributions to biodiversity and nature conservation, archaeology, recreation, and landscape, and receives national protection from the law, especially the Commons Act 2006 and Countryside and Rights of Way Act 2000. Natural England and English Heritage have both regulatory and advisory roles in relation to common land. The Green and Kell have been designated as a Site of Importance for Nature



Flaxton Green looking south



Conservation and rare plants and great crested newts are present in this area.

Part of Flaxton was designated a Conservation Area in 1986, which covers most of the central area of the village and the area known as The Crofts, to the northeast of the main street.

The 2021 Census has not been fully published, but the 2011 Census recorded the population of Flaxton as 343.

Parish Council

Parish councils were first created in 1894 and are the first tier of local government. The 1972 Local Government Act clearly defined the powers, duties, and responsibilities of a parish council in acting positively for their communities. In practice, Flaxton Parish Council comments on planning applications, undertakes projects for the benefit of the village, is a point of contact for the village/villagers and liaises with other statutory and non-statutory bodies on issues which affect the village.

More information about the activities of the Parish Council can be found on the community website at <https://www.flaxtonpc.org.uk/parish-council/>

Housing and Facilities

There are around 150 properties in Flaxton, mostly in private ownership, with only a handful of social and private rental properties and a few holiday lets. 72% of Flaxton residential properties are in Council Tax Bands D to H compared to Ryedale with 44% and 35% in England as a whole.

Flaxton Parish has seven Grade II listed buildings, six of which are in the Conservation Area with the seventh located close to the railway line on the northern perimeter of the village.



The Village Hall

Flaxton's Village Hall was built in 1927 and is used for community events and for monthly parish council meetings.

The Village Hall is managed by The Flaxton Community Trust, a charity whose stated purpose is "The provision and maintenance of a village hall for the use of the inhabitants of the Parish of Flaxton in North Yorkshire without distinction of political, religious or other opinions including use for meetings,

lectures and classes, other forms of recreation and leisure-time occupation, with the object of improving the conditions of life for the inhabitants and promoting education for the inhabitants".

The village has a public house, The Blacksmiths Arms, which has been closed since August 2021.



The Blacksmiths Arms and B&B

There were once three churches/chapels in Flaxton. The remaining one, St Lawrence's Church of England Church, was built in 1853 and has a lychgate housing a war memorial.



St Lawrence's Church

Flaxton Church of England School for pupils to 11 years old was opened in 1867 and closed in 1987 before being converted into a dwelling known as The Old School House. It has a 19th Century clock made by Potts of Leeds.



The Old School House

Just beyond the northern boundary of the village is The Thompsons Arms public house located in the Thornton Le Clay and Foston Parish. Nearby, runs the York to Scarborough railway line along the village boundary.



The Thompsons Arms

Flaxton Station opened in 1845 and was closed to passengers in 1930 and, finally, to goods traffic in 1964.

There are several working farms in the village and other businesses including marquee and event hire, an antiques shop, short term let properties and woodland lodges, a cabinet maker, a forge, a dog park, touring caravan and motorhome sites, and a private nursery.



South of the village, in the Claxton and Sand Hutton Parish, there is Sandburn Hall which has a golf course, sports hall, meeting rooms, hotel, and a restaurant.

THE VILLAGE PLAN

Purpose

This Village Plan sets out a vision for how the Flaxton Community would like to develop over the next five to ten years, and identifies the actions needed to achieve this vision. The Plan includes those things that are relevant to the people who live and work in the community, from playgrounds and the Village Hall to the development of new dwellings, infrastructure, and protection of countryside, hedges, and ponds etc.

This Plan will be used to:

- Represent the views of the community in the way that local services are managed and delivered
- Influence a wide range of organisations and processes which affect our community including those services that will be provided by the new North Yorkshire Unitary Authority
- Help produce a local planning framework, influence local housing, and land management strategies
- Help re-establish a sense of community in Flaxton following the pandemic

The Plan consultation process has aimed to:

- Reflect the views of all sections of the community
- Highlight which features and local characteristics people value
- Identify local problems and opportunities for solving them
- Determine how residents want the community to develop in the future
- Prepare an action plan to achieve this vision.

Village Plan Development Process

A village meeting was held in February 2022 to discuss the concept of the Village Plan and to draw together the important issues faced by the community. The meeting was supported by Community First and attended by the emergency services, a district councillor, a county councillor and 67 villagers.

Subsequently, a Village Plan Steering Group was formed, which then produced a comprehensive questionnaire based around the issues raised at the Village Plan Meeting. A separate questionnaire was also designed for young people up to and including age 18, to be completed independently or with parental help as appropriate.

Having obtained a £1,000 Stronger Community Grant from North Yorkshire County Council to fund the plan, the questionnaires were printed and distributed in July and August 2022 to all properties in the Flaxton Civil Parish.

Completed questionnaires were collected and responses were analysed during the Autumn of 2022 and a draft plan was written. In January 2023, the findings and recommended actions were presented at another village meeting, leading to the production of this Village Plan.

THE QUESTIONNAIRE RESPONSES

Details of all questions and the responses to both the general and younger person questionnaire are contained in the Responses Document. This Village Plan is intended to summarise the findings from the responses and suggest items for the Action Plan. The Responses Document can be found on the village website along with the questionnaires at <https://www.flaxtonpc.org.uk/flaxton-village-plan/>

Each section of the Village Plan references the original question numbers from the questionnaires (young person one with prefix "Y"), so that readers can find out more information about the responses given. The responses are generally summarised in the same sequence as the questionnaires, but some have been reordered to, hopefully, improve clarity for readers. Where appropriate, actions have been proposed to address any matters arising.

The agreed actions are shown later along with the persons or bodies responsible for each action and target timescales for completion.

Response Rate and Profile of Respondents (Questions 1, 2, 3, 4, Y1, Y2, Y3, Y4)

92 households from all areas of the village completed their questionnaire, a 66% response rate after excluding vacant properties. Each questionnaire allowed two householders to participate in the consultation with 159 respondents in total. From the young peoples' questionnaire, 14 responses were received, of which 50% were aged 13 or over and therefore 50% aged 12 or younger.

Each household provided details of the number and age of people living there. The average reported occupancy rate was 2.4 people per home. 21% of households reported having one occupant and 50% two occupants.

Responding households have a much higher proportion of older residents when compared with the UK average. 62% of Flaxton residents are aged over 50 compared to the UK average of 39%. The 2019 ONS population estimate similarly confirms the village to have over 60% of residents aged 50 and above.

54% of respondents have lived in Flaxton for over 20 years and a further 29% for over 5 years. 20% of respondents work in the village.

Young people in the village attend six different schools/colleges in York and Ryedale and generally travel to school by bus, car, or a combination of the two.

Village Communications (Questions 54, 55, 56, 57)

Villagers were asked about how they usually find out about village events and news and whether they have direct access to the Internet and email.

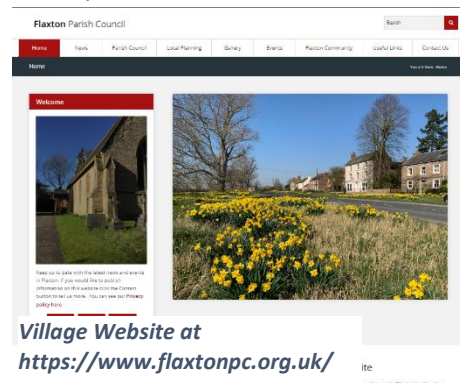
- The most reported were the 'traditional' communication methods namely: Word of mouth (69%), Green Sheet (a news and events leaflet last issued prior to Covid lockdown - 57%), Parish Notice Board (51%), and Harton Benefice Circular (a periodic booklet issued by 8 local churches - 50%)
- Contemporary methods including social media (38%), the village website (28%), and website email blogs (26%) were the next most reported
- 11% said that they are 'in the dark' and outside any village communication loops

In their comments, some respondents proposed a village website and social media groups indicating that the existing website and groups need to be better publicised.

95% of respondents have access to the internet and email suggesting that the website and email blog service could reach out to most villagers. Social media could also be extended to allow communication of more time critical events such as unplanned road closures etc.



Parish Notice Board (adjacent to The Old School House)



Village Website at <https://www.flaxtonpc.org.uk/>

Proposed Actions

- Publish information on how to access the village website and to subscribe to email alerts with the aim of increasing take up
- Publish details of the village WhatsApp and Facebook groups, how to join the relevant groups and the posting rules and etiquette. Also, strengthen the group administration to monitor the content that is posted
- Discuss the future of the Green Sheet with the Church

Village Activities (Questions 6, 10, 11)

There are already some regular community activities such as the Gardening Club, Flaxton Friends, Flaxton Singers and Brownies/Girl Guides, and others on special occasions.

When asked about village activities respondents have a strong but unsatisfied demand for more social and recreational activities. Villagers would particularly like to be able to meet regularly for food (70% respondents) and drinks (74%) and there is significant support for coffee mornings (38%). A place to participate in sport and a library would be popular too.

Approximately 40% of respondents said they are prepared to help organise and run village events.



Proposed Actions

- Publish details of the existing activity groups and how to get involved in them
- Set up a Village Events and Activities Group to plan, organise and coordinate events
- Explore the possibility of obtaining a grant to set up 'Warm Place' coffee mornings in the Village Hall
- Village Events and Activities Group to liaise with the Flaxton Community Hall Trust over the future direction of the Village Hall and the possibilities of using it for sport, exercise, and other social activities

Village Facilities (Questions 5, 7, 8, 9)

When asked about specific facilities respondents said that some are suitable for community activities namely, the Church, The Thompsons Arms and Sandburn Hall.

Opinion on whether the Village Hall is suitable for community activities is almost equally divided with 47% of respondents saying not and 42% saying it is suitable. There are differing opinions as to the future of the Village Hall such as whether it should be renovated or rebuilt, sited in a different location, or whether Sandburn Hall could be used for activities instead.

There is plenty of support on offer from villagers to help improve or re-develop the Village Hall with 67% of respondents volunteering a range of skills.

Three quarters of respondents are in favour of the community purchasing The Blacksmiths Arms if it comes on the market, suggesting that this is a preferred location for social drinks and food.

Proposed Actions

- Pass details of the skills on offer to Flaxton Community Hall Trust to factor into their plans for future investment in Village Hall/New Community Hall
- Engage with the owner of The Blacksmiths Arms to discuss the demand for the pub and possible options for the future – pub re-opening/purchase
- Explore the possibility of using other venues in and around Flaxton (which would also be required to meet demand whilst the Village Hall was being refurbished or re-developed)

Activities and Facilities for Younger People (Questions 12, 13, 14, 15, 16, 17, Y5, Y6, Y7, Y12, Y13)

Everybody was consulted about activities and facilities for young people in the village regardless of whether they had a young person living with them or not. The younger persons' questionnaire asked similar questions and the combined responses are summarised in the next sections.

When asked about facilities for younger people:

- 73% of respondents said that there are insufficient facilities for young people with 60% of residents suggesting that the village needs a safe play area, closely followed by a place for young people to meet (56%)
- 93% of younger respondents also said there are not enough places to play or to meet their friends (79%)
- 86% of younger people would like a park/playground and put forward several other suggestions including a village shop (14%)



When asked about organised activities for younger people:

- 95% of the 87 people responding to this question felt that there are not enough organised activities for younger people
- Activities suggested in the questionnaire were well supported; Sports clubs (59 respondents), a youth club (56), a toddler/play group (52), and Brownies, Guides, Cubs and Scouts (48)
- Respondents also suggested a wide range of indoor and outdoor, individual, team, group, and community activities which can all be found in the Responses Document
- There is a desire for younger people to be actively involved in deciding what they would like
- When planning future facilities and activities the number and age profile of younger people in the village will be an important consideration, as will the number who already participate in activities outside the village

When asked about the good things regarding living in Flaxton young people mentioned its natural features, open spaces, and outdoor activity opportunities (15 respondents), the

quiet rural environment (3) and proximity to useful facilities and activities outside the village (2).

Asked about the things they would like to improve in Flaxton, younger people echoed the need for somewhere to play (8 respondents) and for a shop or mini market (3) along with several other needs as shown in the Responses Document.

Proposed Actions

- Form a Flaxton Youth/Child group to develop a children's/ young people's 'voice' in Flaxton and enable this group to liaise with other groups in the village to ensure they are represented
- Investigate possible schemes to obtain the facilities identified in the plan, in conjunction with other village groups and stakeholders and with regard to the number and ages of younger people
- Seek out volunteers to help organise activities for younger people

Village Environment & Conservation (Questions 18, 19, 20, 21, 22, 24, 25, Y10, Y11)

Villagers were asked to rank several features and characteristics of Flaxton in order of importance to them.

Overall, The Green and Kell were ranked the most important feature, followed by the trees and hedgerows, footpaths and bridleways, and wildlife and habitats. The village's historic properties were ranked the least important behind Flaxton's ponds, Conservation Area Protection, and country lanes.



These sentiments were echoed by young people, as seen in the previous section.

The vast majority (86%) of respondents prefer the dark skies of Flaxton and do not wish to have street lighting.

53% of respondents believe the inconsistent mowing in front of houses facing The Green does not enhance the character of the village, whereas 37% of respondents said that it does. Nevertheless, there was unanimous support for mowing The Green with differing views on the timing and frequency of cut. There needs to be a fine balance between the conservation of wildlife and flowers and safety when the long grass can obscure motorists' views.

When asked about how to preserve the character of the village there was a wide range of suggestions that can be summarised as community management, maintenance, and selective development of the natural features to benefit villagers.

A majority supports the idea of a Flaxton Nature Conservation Group and wider advisory group to fulfil the above roles with 52% of respondents in favour, 36% against, and 12% undecided. 47 respondents (29%) would be willing to organise or be a member of a Nature Conservation Group. 29% of younger respondents would be prepared to be in a Nature Conservation Group.

Proposed Actions

- Form Flaxton Environment and Conservation Group to coordinate the maintenance and development of the village features and habitats
- Establish clear terms of reference and governance for the group with representation from key village stakeholders such as farmers, landowners, Parish Council, Green Gait Owners, and villagers
- Ensure plans, work schedule, and work of the group is communicated to all villagers and transparent to everyone
- Provide more information regarding the legislation which controls the use and development of common land and public rights of way, explaining how permission for changes can be sought by groups or individuals

Public Rights of Way (Questions 23, 26, 27, 28)

89% of respondents said that members of their household walk for recreation, with 55% using Strensall Common. When asked about rights of way around the village 59% of respondents would like more footpaths and permissive rights of way, whereas 37% of respondents would not, with some voicing opposition to allowing walkers and dogs on their land.



Public Footpath along Back Lane

65% of respondents would like more circular walks around the village, 61% would like safe walking to Strensall and places in between, and 47% would like safe walking to the A64 to access the bus stop and places en route, such as Sandburn Hall and Griffon Forest.

Proposed Actions

- Look at options for providing more footpaths around the village
- Explore potential for re-instating useful public rights of way that have been lost from the village

Household Waste Collection (Questions 29, 30, 31, 32, Y10)

Ryedale DC operate a fortnightly wheeled bin collection for non-recyclable waste and a 3-box system (glass, paper/card, cans/specific plastics) collection for recyclable waste on alternate weeks. Residents can pay extra for a fortnightly recyclable garden waste collection which operates for 9 months of the year.



68% of respondents are satisfied with the current service, whereas 31% are dissatisfied with the recycling arrangements, citing the limited range of items that can be recycled (41 respondents) and the smallness of the boxes (22).

24% of respondents would like more communal recycling facilities in the village for clothing (21 respondents) and shoes (13), and several other item types not included in the current kerbside collection system. 64% of young people felt that more could be recycled.

The nearest Waste Recycling Centre (WRC) is 4½ miles away in Towthorpe, but the facility is limited to use by City of York residents. Recycling for larger items requires Flaxton residents to make a 23 miles round trip to the Malton WRC.

Proposed Actions

- Engage with Ryedale DC/Unitary Authority to discuss options for addressing recycling limitations and future plans for harmonising services across the former district areas
- Lobby Unitary Authority to establish reciprocal arrangements for Flaxton residents to use Towthorpe WRC
- Publish information on the website about all nearby waste recycling locations, including supermarkets and filling stations etc., along with details of articles accepted

Energy Saving (Questions 33, 34, 35, 36, Y10)

49% of respondents said that the village should be doing more to adopt energy saving practices, 30% were undecided, and 21% were against the idea. Note that this question was posed before energy prices increased by 27% in October 2022, so respondents' views may now have changed.



When asked about different sustainable energy sources and energy saving measures, the majority of respondents felt that they need more information to decide on their suitability for themselves and the village.

18% said that they would use a communal electricity charging station if one was installed in the village, some others said they may if/when they acquire an electric vehicle.

Young people felt that villagers should use less energy (86% respondents) and use different sources of energy (79%).

Proposed Actions

- Invite a sustainable energy specialist to inform villagers about the different energy saving measures and sustainable energy sources that would be viable in the village
- Keep abreast of communal electric car charger points grants and consider installation in the village if funding becomes available

Fracking (Question 37)

Gas and oil exploration (fracking) licenses have been issued covering most of the Ryedale area. 82% of respondents said that they are not in favour of fracking in the vicinity of the village whereas 9% are in favour, with 9% offering no opinion.

Proposed Actions

- Ensure that villagers are kept abreast of fracking developments within Ryedale
- Contribute actively to consultations and lobbying of decision-makers

Housing Development (Questions 38, 39, 40, 41)

The Ryedale Plan, including a list of potential development sites to meet Ryedale's housing needs to 2027, is currently being reviewed by Ryedale District Council and a 'Key Decisions Consultation' is anticipated in early 2023. With this in mind, villagers were asked whether the number of dwellings in Flaxton should be allowed to increase over the next ten years.



- 64% of respondents said they want the number of dwellings to stay about the same mentioning a lack of facilities and infrastructure to support more housing, and wanting Flaxton to remain as a quiet, rural, conservation village
- 29% of respondents stated that the number of homes could increase by up to 25 with a further 7% suggesting an increase of over 25 homes. Respondents reasoned that Flaxton needs to help address the UK housing shortage and listed potential benefits including attracting younger and local people to the village and helping to support more facilities
- 74% of respondents want to protect against development of Strensall Common and other Flaxton boundaries
- One respondent observed that there has always been some new housing development in Flaxton and had counted around 70 new properties/building conversions since 1960

When asked about the type of new housing, respondents said that the priority should be for privately owned (36%), affordable (30%), retirement/sheltered (26%), and then rental via a housing association (26%).

Proposed Actions

- The Parish Council to take account of villagers' views in any consultations/discussions over housing development in Flaxton
- The Parish Council to take account of villagers' opinion to protect against development of Strensall Common and other Flaxton boundaries
- When published, villagers should 'get involved' in responding to the Ryedale Key Decisions Consultation document and York Plan to ensure that their own views are heard

Flooding, Drainage and Sewerage (Questions 73, 74)

Sewerage and surface water drainage issues were reported by 28% of respondents and the inadequacy of the existing systems were mentioned several times in the questions regarding any future expansion of the village. Surface water flooding affects specific areas of the village during heavy rains.

Proposed Actions

- Develop a drainage strategy for Flaxton
- Relay concerns over the existing infrastructure in Flaxton in any consultations or discussions regarding expansion of the village

Pavements (Questions 42, 43, 44, 71, Y8, Y9)

Villagers were asked about the condition of the tarmac pavements in the village.

- The section of pavement between Oak Busk Lane and the level crossing used to access the local garage and the Thompsons Arms was rated **Unsafe** by 55% of respondents to this question and **Poor** by 27% suggesting that it is a high priority for action. 1 young person also cited this stretch as unsafe
- The Barney Lane pavement had been resurfaced shortly before the consultation. However, some respondents mentioned the long-standing issue of cars parking on the pavement preventing safe walking there
- Other sections of pavement were rated as **less than satisfactory**, with encroachment of vegetation from The Green hindering their use by pushchairs and wheelchairs. The surface is uneven or broken in some places
- There were some suggestions for new pavements or paths to provide safe access to the A64 (21 respondents), towards Strensall along York Lane (11), and to allow villagers to cross Main Street directly to the Village Hall (4)



Pavement to the level crossing

Proposed Actions

- Engage with NYCC Highways to make villagers' views about pavements known and agree a plan with Highways to improve the Oak Busk Lane to level crossing section
- Scrape back the vegetation from sections of pavement both sides of the road to restore to their original width (the Parish Council has secured a small grant to contribute to the work)
- Look at ideas for new sections of pavement when investigating new or re-instated Public Rights of Way

Bus Services (Questions 45, 46, 47, 48, 49)

The Castleline bus service operates between Malton and York and passes through the village with five buses to York and four from York, six days per week.



Castleline bus service

- 7% of respondents said they use the service weekly or monthly. There are also known to be a small number of villagers who use the service daily to attend work and education who we believe did not complete a questionnaire
- 52% of respondents said they never use the service with 36% using the service only occasionally, preferring to use their own transport. Infrequency (64 mentions), inappropriate times (42), wrong destinations (23) and unreliability (8) were cited as other reasons for not using the service
- Respondents suggested that they would use the bus more frequently if some or all of these issues were to be addressed

The half-hourly Coastliner bus stops on the A64 close to the Scotchman Lane junction and serves many locations between Leeds, York, and the East Coast towns.

19% of respondents said they use this service occasionally. 77% said they never use the service citing the distance of the bus stop from the village and the dangerous walk along Scotchman Lane, hence support for safe walking to the A64.

Proposed Actions

- Ensure the village does not lose the Castleline service as some villagers depend upon it
- Survey villagers to identify the specific needs of a village bus service (times, frequency, destinations etc.), and perhaps engage with similar-minded villages on the route(s)
- Engage with the Unitary Authority to look at options for improving bus services in the village
- Investigate the installation of a pavement or path to the A64

Community Transport (Questions 50, 51, 52)

There is already a Community Transport Service in Ryedale. However, 40% of respondents said villagers would benefit from having a Village Community Transport Service (CTS) with 37% saying it would not, some qualifying their response as maybe needing a CTS when they can no longer drive! Attending medical appointments (47 respondents), collecting prescriptions (27) and shopping (27) were identified as the main reasons for using a CTS.



4 respondents said they would be prepared to organise and coordinate a CTS, a further 28 said that they would be willing to volunteer their services as a driver.

Proposed Actions

- Publicise details of the Ryedale Community Transport Service
- Investigate rules and regulations regarding provision of a Village Community Transport Service (insurance, screening, cost recovery, charging etc)
- Hold a meeting of villagers who expressed support for running and using a CTS to organise and implement the service

Car Share (Question 53)

There was only limited demand for a car share service from 4% of respondents.

Crime and Anti-Social Behaviour (Questions 62, 63, 64)

When asked about crime and anti-social behaviour in the village respondents reported dog fouling (47) and littering (36) as the main issues followed by telephone fraud (27), burglary and housebreaking (14), and theft or damage to property (13).

63% of respondents believe that the village would benefit from re-instating a Neighbourhood Watch Scheme, whereas 19% believe not. 27% of respondents would be prepared to organise or be an active member of a Neighbourhood Watch.

Proposed Actions

- Publish details of how villagers can report different types of crime and anti-social behaviour
- Consider investing in more dog waste and litter bins after consulting villagers on locations
- Arrange a meeting for villagers interested in setting up a Neighbourhood Watch Scheme and agree next steps towards implementation

Emergency Services (Questions 59, 60, 61)

26% of respondents reported having contacted the emergency services over the past few years.

Satisfaction with the ambulance and fire services response was high with an average rating of 4.9 out of 5 from 11 attendances for the ambulance service and 4.7 out of 5 from 21 attendances for the fire service.



A handful of respondents said they are keen to retain the fire station in Huntington. Comments also suggest that emergency services may struggle to find addresses in the village, especially at night, due to limited house numbering and dependence on house names.

Satisfaction with the police service was lower with a rating of 3.6 out of 5 from 20 attendances with half of outcomes rated as below satisfactory. Respondents would like to see more police presence in the village other than a safety camera van and more attention given to rural crimes.

Proposed Actions

- Liaise with the Fire and Police Commissioner's Office regarding ongoing service changes
- Participate in live consultations aimed at retaining a local fire service and improving policing in the village
- Request a more frequent and effective police presence in the village
- Ensure emergency services have updated plans of housing in the village

Traffic & Road Safety (Questions 65, 66, 67, 68, 69, 70, Y8, Y9)

Villagers were asked several questions about traffic passing through Flaxton and how it affects their daily lives.

79% of respondents said that traffic levels have increased over the last five years, with 8% saying they have not. 58% said that traffic levels have nearly doubled or doubled with 27% saying that levels have tripled or more.

When asked about the impact of traffic on their lives highest mentioned was excessive noise (77 respondents and 1 young person), followed by vibration (60), threat to personal safety (59 and young people either walking or cycling), and then air pollution (58).

An increased incidence of speeding over the past five years was reported by 69% of respondents with 19% saying that the incidence of speeding has not increased.



When asked about deterrents to speeding, Vehicle Activate Signs (VAS) with 107 mentions and Safety Cameras with 72 were the most suggested followed by physical measures such as chicanes (23) and speed bumps (21) with a few wanting cows to be returned to The Green.

When consulted about imposing weight restrictions on vehicles passing through the village, 62% of respondents were in favour and 32% were against. Those against cited difficulty of enforcement and large agricultural and delivery vehicles necessarily having to visit the village.

Proposed Actions

- Engage with the police and road safety bodies to discuss specific traffic and speeding issues raised by villagers
- Identify other locations for siting of the Safety Camera Van
- Explore options for reducing speed and traffic including HGV levels through the village, also consider the effect of A64 dualling (see later)
- Agree and implement necessary measures

Parking (Questions 71, 72)

82% of respondents felt that there were no issues with parking in their part of the village. However, of the 12% who did feel there were issues, parking on Barney Lane and parking for houses which front on to the village green without a driveway were the main issues. Barney Lane is narrow and an access road for large farm vehicles. Not all properties have a drive or access across the pavement to a drive. Parking on the road impedes the access of farm vehicles and parking on the pavement makes it unsafe for pedestrians.

Proposed Actions

- Liaise with the police and highways over possible solutions to the parking issues on Barney Lane
- Investigate possible solutions for residents without a drive who front on to The Green

Village Roads (Questions 75, 76, 77)

Villagers were asked to rate the condition of each road entering or within the village.

- Scotchman Lane from the A64 was rated as between **dangerous and unsatisfactory** and in urgent need of surface renewal and clearer central and road-edge white lines
- Other main roads leading into the village were rated as **better than satisfactory**
- Roads within the village were rated as slightly **less than satisfactory**



Scotchman Lane road surface

Inadequate repairs, potholes, lack of kerbs or white lines were all frequently mentioned in comments.

Proposed Actions

- Engage with NYCC Highways to discuss road condition findings and to agree a repair schedule for Scotchman Lane and other roads
- Appoint a 'Road Champion' to each road in the village to monitor condition of 'their' road and raise repair requests to NYCC Highways, monitor progress etc. as appropriate

A64 Dualling (Questions 80, 81, 82)

The A64 Hopgrove Dualling consultation was launched by National Highways after the questionnaire had been issued. Respondents, therefore, may have had incomplete information when answering the questions posed about A64 Dualling.

67% said they are in favour of dualling the A64 between Hopgrove and the Jinnah **along the existing road line** with 17% against and 16% undecided. When asked about other routes support for dualling dropped to 38%.



There are worries about possible increased noise and traffic through the village caused by dualling. (Highways England preferred option "D" would run closer to Flaxton with only two intermediate access points between Hopgrove and the Jinnah, one at the A64/Sandy Lane junction reached via Scotchman Lane.)

Proposed Actions

- Build a list of villagers' concerns about the now Highways England preferred dualled route
- Engage with Highways England and NYCC Highways to present concerns grouped between 'during the build' and 'on completion'
- Ensure the highways bodies properly quantify the impacts and put in place suitable noise and speed mitigation measures

Scotchman Lane to A64 Junction (Questions 78, 79)

Villagers were asked about whether the changes made in 2017 to the Scotchman Lane/A64 junction have improved safety for vehicles leaving Flaxton to join the A64.

86% of respondents said that safety has not been improved with some now avoiding the junction altogether as they worry for their safety when turning right. Many advocated re-instating the coastbound slip road or installing a roundabout/traffic lights to improve safety and reduce access times.



7% of residents felt that safety had been improved by preventing those vehicles turning right onto the A64 from cutting in front of ones turning right into Scotchman Lane from the A64.

Proposed Actions

- Feed findings to Highways England suggesting junction improvements particularly if A64 Dualling does not get funding

The Parish Council (Question 58)

Villagers were asked to rank Parish Council activities in order of importance to them. The three most important were representing villagers’ views on County and National matters, keeping people informed on day-to-day life in the village and representing the village in planning matters. Keeping villagers informed has been addressed in the communication section and the other identified priorities for the Parish Council are two of the key functions of a parish council which do already take place.

Villagers also have the opportunity to respond independently to most external consultations brought before the Parish Council or to communicate their views and opinions via the Parish Clerk bearing in mind that the views held by the Council may differ from those of individuals.

Proposed Actions

- Parish Council continue to publish information about consultations affecting the village
- Villagers to ‘have their voice heard’ by contributing to consultations either directly or via the Parish Council

Anything we have missed? (Question 83)

When asked whether the questionnaire covered all the ‘hot topics’ in the village, 73 respondents used this to reinforce their answers to earlier questions. The main themes related to maintaining the character of the village, re-opening the public house for food and drinks, having a village shop and delicatessen/café, and improving the village hall.

Above all, villagers are keen to foster a greater community spirit in the village.

Action Plan

The Appendix in the next section summarises all the proposed actions into a single table and suggests:

- The key steps involved in progressing each action
- The proposed group to lead and deliver the action
- The consultees who will need to be involved in delivering the action
- An initial view of an achievable completion date for the action

The progress of each action will be tracked and monitored by the Village Plan Steering Group.

FLAXTON VILLAGE PLAN – 2023

ACTION PLAN

Plan Section	Action	Steps (if any)	Lead	Consultees	Complete by	Progress
Village Communications	Increase take-up of village website	Publish information on how to access the village website Publish information on how to subscribe to email alerts for the website	Village Plan Steering Group	Parish Council	Quarter 1 2023	
	Increase use of village WhatsApp and Facebook groups	Publish details of the village WhatsApp and Facebook groups and how to join them	Village Plan Steering Group	Group Administrators	Quarter 1 2023	
	Strengthen the groups' administration to monitor the content that is posted	Nominate the administrators of each group Prepare, agree, and circulate posting rules and etiquette	Village Plan Steering Group	Group Administrators	Quarter 2 2023	
	Continue with the other methods as appropriate	Discuss the Green Sheet future with the Church	Village Plan Steering Group	Church	Quarter 3 2023	
Village Activities	Publish details of the existing activity groups and how to get involved in them	Obtain information Collate and publish information	Village Plan Steering Group	Brownies/Guides, Flaxton Friends, Gardening Club, Flaxton Singers	Quarter 2 2023	
	Set up a Village Events and Activities Group to plan, organise and coordinate events	Invite villagers to set group up	Village Plan Steering Group initially and then Events and Activities Group	Villagers, Church, Community Hall Trust, Green Gait, Parish Council	Quarter 2 2023	
	Explore the possibility of obtaining a grant to set up 'Warm Place' coffee mornings in the Village Hall	Await formation of the Village Events and Activities Group	Events and Activities Group	Villagers, Church, Community Hall Trust, Parish Council	Quarter 4 2023	
	Village Events and Activities Group to liaise with the Flaxton Community Hall Trust over the future direction of the Village Hall and the possibilities of using it for sport, exercise, and other social activities.	Await formation of the Village Events and Activities Group	Events and Activities Group	Community Hall Trust	Quarter 2 2023	

FLAXTON VILLAGE PLAN – 2023

ACTION PLAN

Plan Section	Action	Steps (if any)	Lead	Consultees	Complete by	Progress
Village Facilities	Pass details of the skills on offer to Flaxton Community Hall Trust to factor into their plans for future investment in Village Hall/New Community Hall		Village Plan Steering Group	Village Plan Steering Group, Events and Activities Group	Quarter 1 2023	
	Engage with the owner of the Blacksmiths Arms to discuss the demand for the pub and possible options for the future – pub re-opening/purchase	Agree representatives from the Village Plan Steering Group or wider village community Set up a meeting with the owner of the Blacksmiths Arms	Village Plan Steering Group	Village Plan Steering Group, Villager(s), Blacksmiths Arms	Quarter 1 2023	
	Explore the possibility of using other venues in and around Flaxton (which would be required to meet demand whilst the Village Hall was being refurbished or re-developed)	Approach other venues – The Thompsons Arms, Sandburn Hall, the Church	Events and Activities Group	Thompsons Arms, Community Hall Trust, Events and Activities Group, Sandburn Hall, The Church	Quarter 2 2023	
Activities for Young People	Form a Flaxton Youth/Child Group to develop a children's/ young people's 'voice' in Flaxton and enable this group to liaise with others in the village to ensure they are represented	Establish any legal/safeguarding requirements to forming a group Find adults who are prepared to help set up the group Invite young people to an initial meeting	Village Plan Steering Group	New Unitary Authority, Church, Parish Council, Community Hall Trust, Villagers	Quarter 2 2023	
	Investigate possible schemes to obtain the necessary facilities identified in the plan, in conjunction with other village groups and stakeholders	Set up Flaxton Youth/Child Group first	Youth/Child Group	New Unitary Authority, Church, Parish Council, Community Hall Trust, Green Gait Owners	Quarter 4 2023	

**FLAXTON VILLAGE PLAN – 2023
ACTION PLAN**

Plan Section	Action	Steps (if any)	Lead	Consultees	Complete by	Progress
Village Environment and Conservation	Form Village Environment and Conservation Group to coordinate the maintenance and development of the village features and habitats	<p>Invite villagers to form a group</p> <p>Establish clear terms of reference and governance for the group</p> <p>Ensure plans, work schedule, and work of the group is communicated to all villagers and transparent to everyone</p>	Village Plan Steering Group initially	Farmers, Landowners, Parish Council, Green Gait Owners, Young Persons' Group, Events and Activities Group, Church, Community Hall Trust	Quarter 2 2023	
	Provide more information regarding the legislation which controls the use and development of common land and public rights of way, explaining how permission for changes can be sought by groups or individuals		Village Environment and Conservation Group	Farmers, Landowners, Parish Council, Green Gait Owners	Quarter 3 2023	
Public Rights of Way	Look at options for providing more footpaths around the village	Await formation of the Village Environment and Conservation Group			Quarter 4 2023	
	Explore potential for re-instating useful public rights of way that have been lost from the village	Await formation of the Village Environment and Conservation Group			Quarter 4 2023	
Household Waste Collection	Engage with Ryedale DC/Unitary Authority to discuss options for addressing re-cycling limitations and future plans for harmonising services across the former district areas		Parish Council	Ryedale District Council, New Unitary Authority	Quarter 3 2023	
	Lobby Unitary Authority to establish reciprocal arrangements for Flaxton residents to use Towthorpe WRC		Parish Council	New Unitary Authority	Quarter 3 2023	
	Publish information on the website about all nearby waste recycling locations, including supermarkets and filling stations etc., along with details of articles accepted	<p>Obtain information</p> <p>Publish information</p>	Parish Council	RDC/New Unitary Authority, Local recycling providers	Quarter 2 2023	

**FLAXTON VILLAGE PLAN – 2023
ACTION PLAN**

Plan Section	Action	Steps (if any)	Lead	Consultees	Complete by	Progress
Energy Saving	Invite a sustainable energy specialist to inform villagers about the different energy saving measures and sustainable energy sources that would be viable in the village	Find Sustainable Energy Specialist Arrange and publicise meeting	Parish Council	Sustainable Energy Specialist	Aim for May 2023 - Annual Parish Meeting	
	Keep abreast of communal electric car charger points grants and consider installation in the village if funding becomes available		Parish Council	Parish Council, New Unitary Authority	Ongoing	
Fracking	Ensure that villagers are kept abreast of fracking developments within Ryedale		Parish Council	Parish Council, New Unitary Authority	Ongoing	
	Contribute actively to consultations and lobbying of decision-makers		Parish Council	Parish Council, New Unitary Authority	Ongoing	
Housing Development	The Parish Council to take account of villagers' views in any consultations/discussions over housing development in Flaxton	Publicise Ryedale Key Decisions Document and other consultations and encourage villagers to respond	Parish Council	Ryedale District Council, York Council, Villagers	Ongoing	
	The Parish Council to take account of villagers' opinion to protect against development of Strensall Common and other Flaxton boundaries	Publicise York Plan consultations and encourage villagers to respond on matters relating to Flaxton boundaries				
	When published, villagers should 'get involved' in responding to the Ryedale Key Decisions Consultation document and York Plan to ensure that their own views are heard					
Flooding, Drainage and Sewerage	Develop a drainage strategy for Flaxton		Parish Council	Yorkshire Water, New Unitary Authority, Parish Council	Quarter 1 2024	

**FLAXTON VILLAGE PLAN – 2023
ACTION PLAN**

Plan Section	Action	Steps (if any)	Lead	Consultees	Complete by	Progress
	Relay concerns over the existing infrastructure in Flaxton in any consultations/discussions regarding expansion of the village		Parish Council	Ryedale District Council, New Unitary Authority	Quarter 1 2024	
Pavements	Engage with NYCC Highways to make villagers' views known and agree a plan with to improve the Oak Busk Lane to level crossing section		Parish Council	Highways	Quarter 3 2023	
	Scrape back the vegetation from sections of pavement, on both sides of the road, to restore to their original width (the Parish Council has secured a grant to contribute to the work)	The Conservation Volunteers (TCV) to complete work to grant amount (subject to agreement/contract with TCV) Volunteers from village to do any remaining sections	Parish Council	TCV, Green Gait, Parish Council, Villagers	Quarter 3 2023	
	Look at ideas for new sections of pavement when investigating new or re-instated Public Rights of Way		Village Environment and Conservation Group	Parish Council, Green Gait, New Unitary Authority	Quarter 1 2024	
Bus Services	Ensure the village does not lose the Castleline service as some villagers depend upon it		Parish Council	Villagers	Ongoing	
	Survey villagers to identify the specific needs of a village bus service (times, frequency, destinations etc.), and perhaps engage with similar-minded villages on the route(s)	Organise survey Liaise with Castleline over findings	Parish Council	Parish Council, Castleline, Villagers	Quarter 2 2023	
	Engage with the Unitary Authority to look at options for improving bus services in the village		Parish Council	New Unitary Authority, Bus providers	Quarter 3 2023	
	Investigate the installation of a pavement or path to the A64		Parish Council	Highways, Green Gait Owners	Quarter 1 2024	

**FLAXTON VILLAGE PLAN – 2023
ACTION PLAN**

Plan Section	Action	Steps (if any)	Lead	Consultees	Complete by	Progress
Community Transport	Publicise details of the Ryedale Community Transport Service	Obtain details Publish details	Parish Council	Ryedale Community Transport Service (CTS), Parish Council	Quarter 2 2023	
	Investigate rules and regulations regarding provision of a Village Community Transport Service (insurance, screening, cost recovery, charging etc)	Hold a meeting of villagers who expressed support for running and using a CTS to organise and implement the service	Village Plan Steering Group	Ryedale District Council, Villagers	Quarter 3 2023	
Crime and Anti-social Behaviour	Publish details of how villagers can report different types of crime and anti-social behaviour	Obtain information Publish information	Parish Council	Ryedale District Council, Unitary Authority, Police, Parish Council	Quarter 2 2023	
	Consider investing in more dog waste and litter bins after consulting villagers on locations	Consult on locations Find and apply for a grant/additional precept	Parish Council	Villagers, Grant providers	Quarter 4 2023	
	Arrange a meeting for villagers interested in setting up a Neighbourhood Watch Scheme and agree next steps towards implementation		Village Plan Steering Group	Villagers	Quarter 2 2023	
Emergency Services	Liaise with the Fire and Police Commissioner's Office regarding ongoing service changes		Parish Council	Fire and Police Commissioner's Office	Ongoing	
	Participate in live consultations aimed at retaining a local fire service and improving policing in the village		Parish Council	Fire and Police Commissioner's Office, Villagers, Parish Council	Ongoing	
	Request a more frequent and effective police presence in the village		Parish Council	Fire and Police Commissioner's Office	Quarter 2 2023	

**FLAXTON VILLAGE PLAN – 2023
ACTION PLAN**

Plan Section	Action	Steps (if any)	Lead	Consultees	Complete by	Progress
	Ensure emergency services have updated plans of housing in the village		Parish Council	Fire and Police Commissioner's Office, Ambulance Service	Quarter 2 2023	
Traffic and Road Safety	Engage with the police and road safety bodies to discuss specific traffic and speeding issues raised by villagers		Parish Council	Fire and Police Commissioner's Office	Quarter 2 2023	
	Identify other locations for siting of the Safety Camera Van		Parish Council	Fire and Police Commissioner's Office	Quarter 3 2023	
	Explore options for reducing speed and traffic including HGV levels through the village	Agree and implement necessary measures	Parish Council	Fire and Police Commissioner's Office, Highways	Ongoing	
Parking	Liaise with the police and highways over possible solutions to the issues of parking on Barney Lane		Parish Council	Fire and Police Commissioner's Office, Highways	Quarter 3 2023	
	Investigate possible solutions for residents without a drive who front on to The Green		Village Plan Steering Group	Green Gait Owners, Villagers affected	Quarter 3 2023	
Village Roads	Engage with NYCC Highways to discuss road condition findings and to agree repair schedule for Scotchman Lane and other roads		Parish Council	Highways, Parish Council	Quarter 2 2023	
	Appoint a 'Road Champion' to each road in the village to monitor condition of 'their' road and raise repair requests to NYCC Highways, monitor progress etc. as appropriate		Parish Council	Highways, Parish Council, Villagers	Quarter 2 2023	
A64 Dualling	Build a list of villagers concerns regarding the now Highways England preferred dualled route (Option D)		Village Plan Steering Group	Villagers, Parish Council, Highways	Quarter 2 2023	

**FLAXTON VILLAGE PLAN – 2023
ACTION PLAN**

Plan Section	Action	Steps (if any)	Lead	Consultees	Complete by	Progress
	Engage with Highways England and NYCC Highways to present concerns grouped between ‘during the build’ and ‘on completion’		Village Plan Steering Group	Villagers, Parish Council, Highways	Quarter 3 2023	
	Ensure the highways bodies properly quantify the impacts and put in place suitable noise and speed mitigation measures		Village Plan Steering Group	Villagers, Parish Council, Highways	Ongoing	
Scotchman Lane to A64 Junction	Feed findings to Highways England suggesting junction improvements particularly if A64 Dualling does not get funding		Village Plan Steering Group	Villagers, Parish Council, Highways	Quarter 4 2023	
The Parish Council	Parish Council to continue to publish information about consultations affecting the village		Parish Council		Ongoing	
	Villagers to ‘have their voice heard’ by contributing to consultations either directly or via the Parish Council		Parish Council	Villagers	Ongoing	



St Lawrence's Church



Looking north towards Flaxton Lodge



The Lychgate and War Memorial



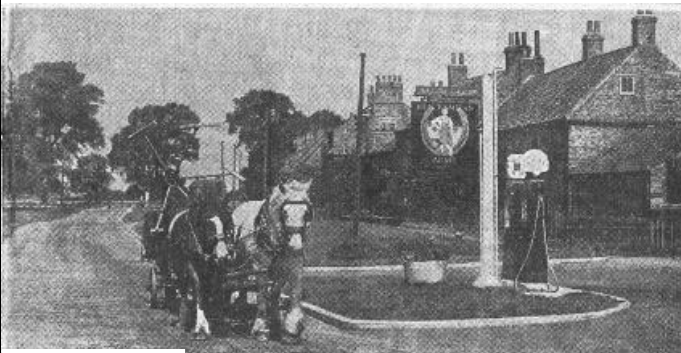
Mrs Hall near a village well



Group at The Rectory



Looking across the York Lane junction to The Blacksmiths



The Filling Station More work for the blacksmiths. Ernest Thompson had been very busy at the Forge and



Looking north from the York Lane junction

